

Order Form

Name: _____

Address: _____

Phone: _____

E-mail: _____

_____ Souvenir Brick \$35

_____ Memory Brick \$50
(16 characters per line)

_____ First Line

_____ Second Line

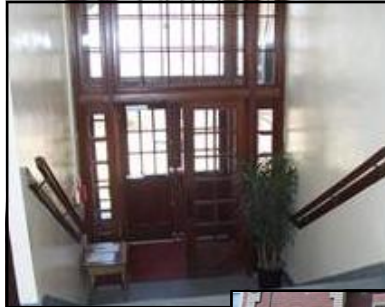
_____ Third Line

Total payment enclosed: \$ _____

Please make checks payable to
LES PTA and write "bricks" in the memo
line. Send order form and payment to:

LES PTA Bricks
PO Box 417
Lumberport, WV 26386-0417

Thank you for your support!



Lumberport Elementary School



Lumberport Elementary
School PTA is offering two
great opportunities to be a
part of history. Reserve
yours today!



We have waited so long for our
new school, but we do not want
our old school to be
FORGOTTEN!

Lumberport Elementary Eagles:

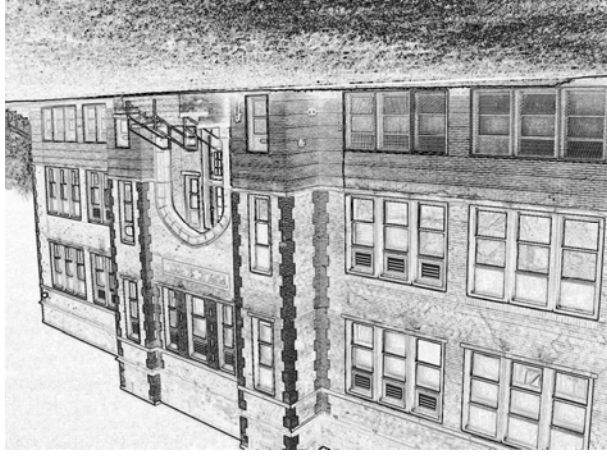
Soaring to New Heights

Lumberport Elementary School PTA is selling the bricks from our old school building. The proceeds from this sale will help purchase new playground equipment for the new school. This is a great opportunity to remember the historic Lumberport Elementary School building and become a part of the new school! Order one of these unique bricks today!

There are two options available. Take home a piece of history by purchasing a Souvenir Brick or remember a loved one with a Memory Brick that will become a part of the new school.

A Souvenir Brick includes a faceplate engraved with a photo of the original school and the dates 1928 - 2011, the years the school was established and demolished.

Memory Bricks will include an engraving of your choice up to three lines of text with a maximum of 16 characters each. Your brick will be on display throughout the property in various places, such as in benches, walkways, and walls. What a great piece of history to own, and a great way to be included in the new school!



Lumberport Elementary School
1928 - 2011

Souvenir Brick \$35
includes a brass faceplate engraved with a photo of the original school and the years 1928 - 2011.

Memory Brick \$50

includes an engraving of your choice and will be on display as a part of the new school building. Engraving can be up to three lines with a maximum of 16 characters each. For example:

**In Loving Memory
John A. Smith
1935 - 1995**

Price List:

If you have any questions,

please contact

the school 304-326-7020 or

Scott & Melissa Jett 304-783-4466