

---

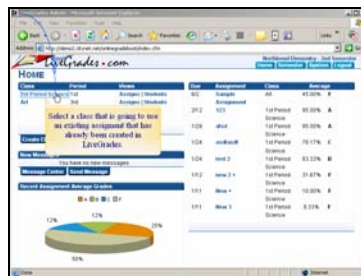
---

---

---

Slide 1

Text Captions: LiveGrades  
Copying an Assignment



---

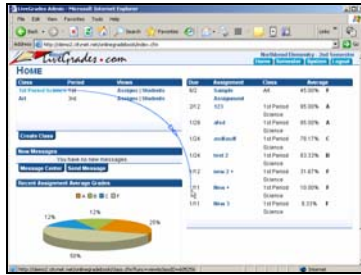
---

---

---

Slide 2

Text Captions: Select a class that is going to use an existing assignment that has already been created in LiveGrades.



---

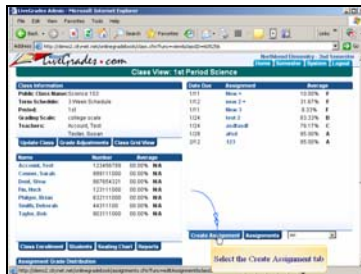
---

---

---

---

Slide 3



---

---

---

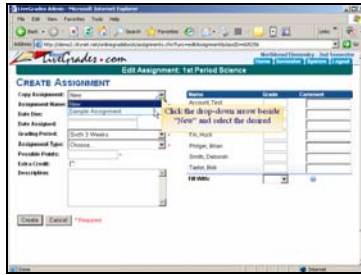
---

---

Slide 4

Text Captions: Select the Create Assignment tab





---

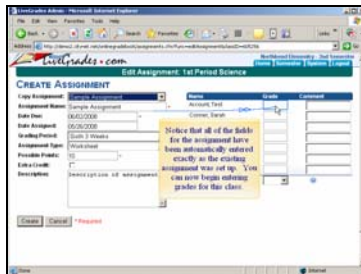
---

---

---

Slide 7

Text Captions: Click the drop-down arrow beside "New" and select the desired existing assignment.



---

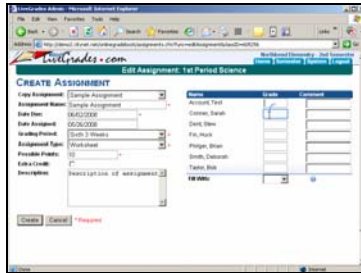
---

---

---

Slide 8

Text Captions: Notice that all of the fields for the assignment have been automatically entered exactly as the existing assignment was set up. You can now begin entering grades for this class.



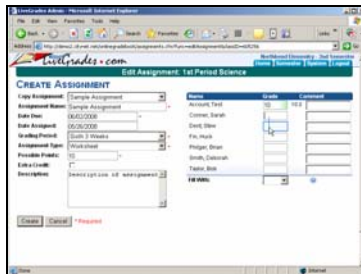
---

---

---

---

Slide 9



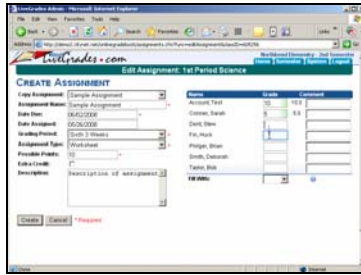
---

---

---

---

Slide 10



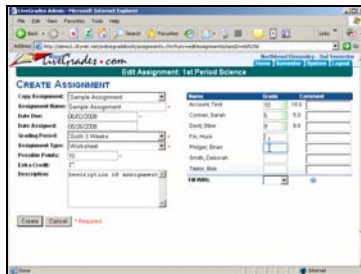
---

---

---

---

Slide 11



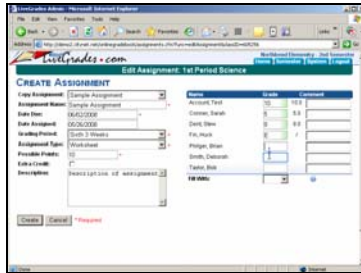
---

---

---

---

Slide 12



---

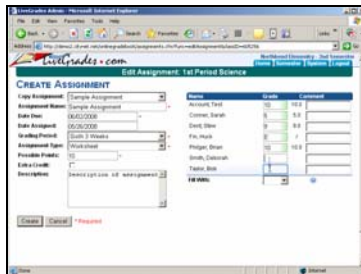
---

---

---

---

Slide 13



---

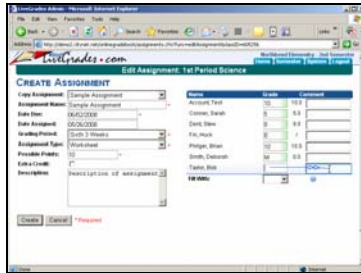
---

---

---

---

Slide 14



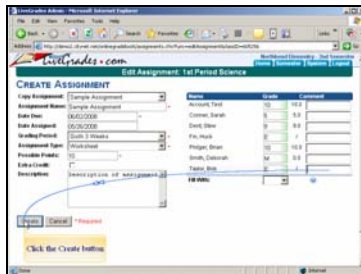
---

---

---

---

Slide 15



---

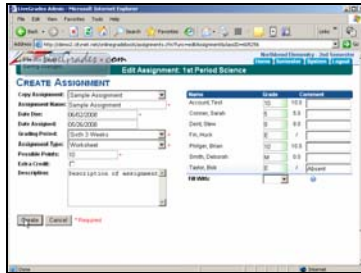
---

---

---

Slide 16

Text Captions: Click the Create button



---

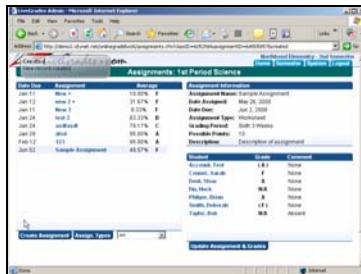
---

---

---

---

Slide 17



---

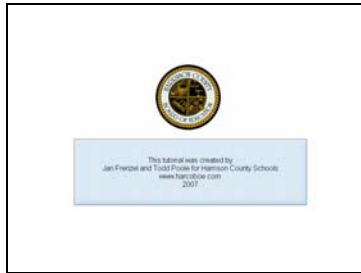
---

---

---

---

Slide 18



---

---

---

---

Slide 19

Text Captions: This tutorial was created by  
Jan Frenzel and Todd Poole for Harrison  
County Schools

[www.harcoboe.com](http://www.harcoboe.com)

2007