

---

---

---

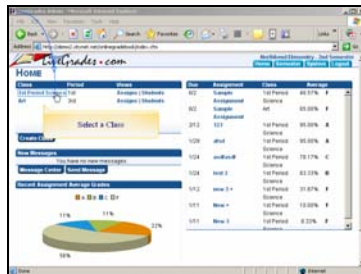
---

---

---

Slide 1

Text Captions: LiveGrades  
Creating Assignment Types



---

---

---

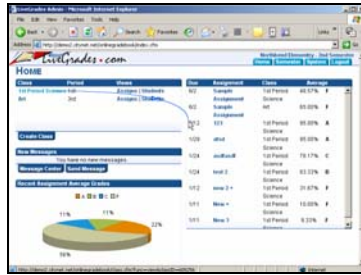
---

---

---

Slide 2

Text Captions: Select a Class



---

---

---

---

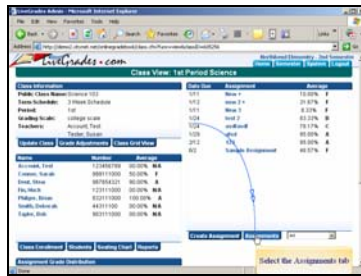
---

---

---

---

Slide 3



---

---

---

---

---

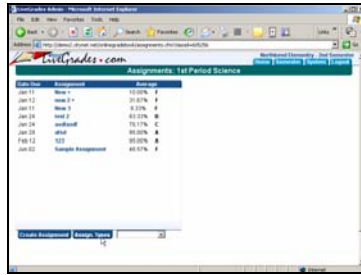
---

---

---

Slide 4  
Text Captions: Select the Assignments tab





---

---

---

---

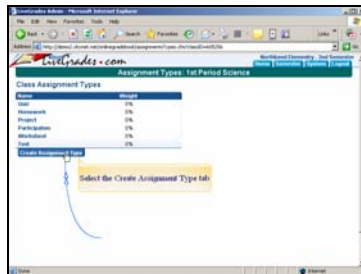
---

---

---

---

Slide 7



---

---

---

---

---

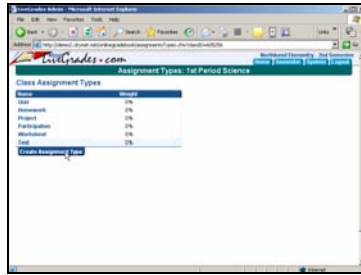
---

---

---

Slide 8

Text Captions: Select the Create Assignment Type tab



---

---

---

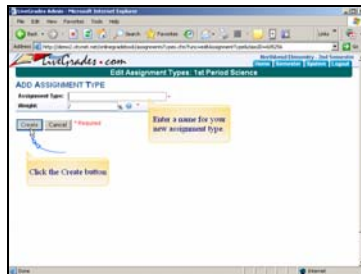
---

---

---

---

Slide 9



---

---

---

---

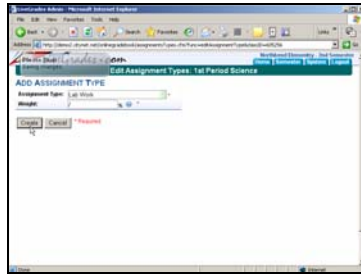
---

---

---

Slide 10

Text Captions: Click the Create button  
Enter a name for your new assignment type.



---

---

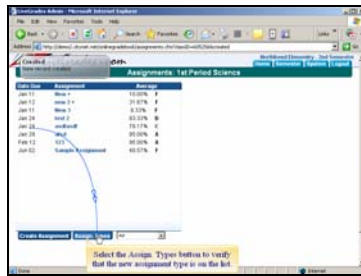
---

---

---

---

Slide 11



---

---

---

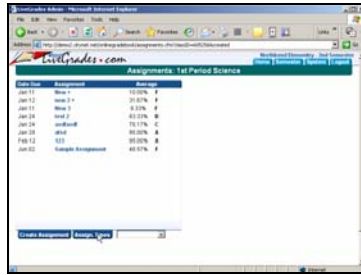
---

---

---

Slide 12

Text Captions: Select the Assign. Types button to verify that the new assignment type is on the list.



---

---

---

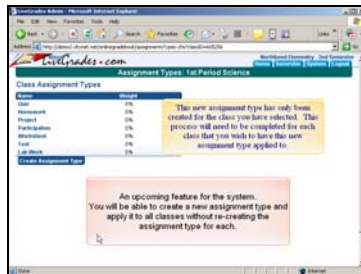
---

---

---

---

Slide 13



---

---

---

---

---

---

---

Slide 14

Text Captions: An upcoming feature for the system. You will be able to create a new assignment type and apply it to all classes without re-creating the assignment type for each. This new assignment type has only been created for the class you have selected. This process will need to be completed for each class that you wish to have this new assignment type applied to.



---

---

---

---

---

---

Slide 15

Text Captions: This tutorial was created by  
Jan Frenzel and Todd Poole for Harrison County Schools  
www.harcoboe.com  
2007